

Choose ALPOLIC® performance to make your project practical and durable. Choose ALPOLIC® finishes and colors to make it truly remarkable.

We offer an extensive selection of rich, vibrant colors and styles for both painted and natural metal surfaces, working with you to bring your design intent to reality. Rigid, lightweight panels that fulfill your vision with a finish of enduring quality – that’s the beauty of ALPOLIC® materials.

Browse our offerings, and let’s build.

Architectural Stock Finishes and Colors

STOCK painted colors are available on 4mm-thick panels, with many of the most popular choices stocked in a selection of widths and lengths. Specify a polyethylene (PE) or fire-resistant (fr) core – typically required by fire codes when building over 40 feet. Then choose a fluoropolymer paint finish offered in a variety of solid colors, metallics and micas. These panels are manufactured to architectural standards and stocked for immediate shipment.

ANODIZED panels are manufactured with 1100 alloy aluminum. They are available in both 50- and 62-inch widths with a stock clear anodized Class 1 finish or a choice of five custom Class 1 colors.

NATURAL METALS offer a traditional look in a state-of-the-art panel system. These 4mm panels offer your choice of metal surface while retaining the flatness and workability of aluminum composite.

Corporate Identity - Stock Program Colors

PROGRAM or 10 year finish warranty colors are stocked in the standard options shown here, or can be custom-created for your unique project. We use the advanced Lumiflon® FEVE fluoropolymer resin in two or three coats, or the Kynar® PVDF coating system to create a vivid, extremely durable finish in an astounding range of colors and glosses, including metallic and mica options. Panels are stocked in either 3mm or 4mm thickness.

Specialty Stock Colors and Finishes

STONE/TIMBER SERIES finishes are produced using our proprietary image-transfer process in concert with Lumiflon® FEVE fluoropolymer coatings, providing exceptional protection with the classic beauty of stone or timber. We stock standard 62-inch panels for your immediate needs.

PRISMATIC finishes combine Lumiflon® FEVE fluoropolymer technology with specialized pigments to create unique colors and effects. The resulting finishes can make the surface glisten or even change colors with different lighting or the movement of the sun. Consult our Prismatic brochure to find the perfect color, gloss and effect for your design.

DECORATIVE panels use specially treated aluminum surfaces with crystal-clear coats of Lumiflon® FEVE resin to protect the panels and maintain a pristine look, even in harsh exterior applications. HPA offers a polished shine, while HLZ has the look of brushed stainless steel.

MULTI-COLOR panels incorporate an advanced coating process engineered by ALPOLIC® to accommodate almost any color scheme. From bright and glossy to muted and subtle, these rich and versatile color systems can only be accomplished by combining Lumiflon® FEVE technology with our advanced die coil coating system. We can work with you to help you choose the perfect look to convey your message.

CUSTOM COLORS – Bright, clean high-gloss colors, rich metallics, low-gloss earth tones, prismatic special effects and more: If you can imagine a color, we can make it real. Contact customer service to connect with our color experts.



Lumiflon® FEVE, a remarkable second-generation fluoropolymer coating, meets the weatherability and chemical-resistance standards you would expect from PVDF finishes, but delivers unprecedented design and performance advantages – a rich palette of vivid colors, a full gloss range, excellent adhesion, recoatability and even ambient cure capabilities.

	FEVE/Lumiflon®	PVDF/Kynar®
Durability	Meets AAMA 2605	Meets AAMA 2605
Color Range	Bright to Muted	Muted Only
Color Retention	Excellent	Excellent
Gloss Range	30–70	30–40
Gloss Retention	Excellent	Excellent
Chalking Resistance	Excellent	Excellent
Field Touch-Up	Excellent	Poor
Marring Resistance	Excellent	Good

For additional information, samples or a list of ALPOLIC® fabricators, please call 1-800-422-7270 or visit www.alpolic-americas.com.

ALPOLIC®
M A T E R I A L S

Let's Build

MITSUBISHI CHEMICAL COMPOSITES AMERICA, INC.

401 Volvo Parkway, Chesapeake, VA 23320
Telephone: 800-422-7270 | Facsimile: 757-436-1896
www.alpolic-americas.com | e-mail: info@alpolic.com

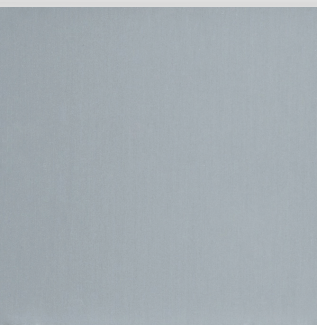
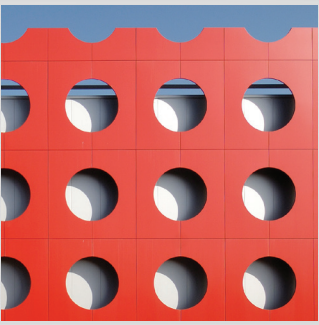
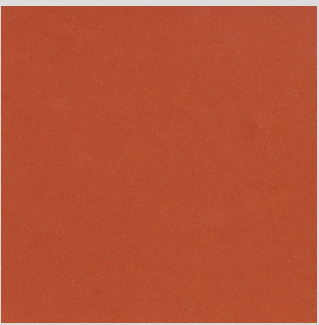
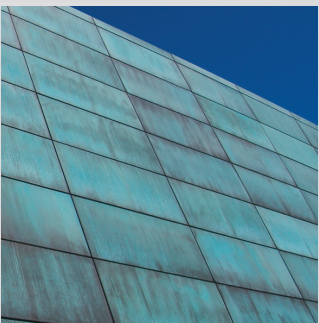
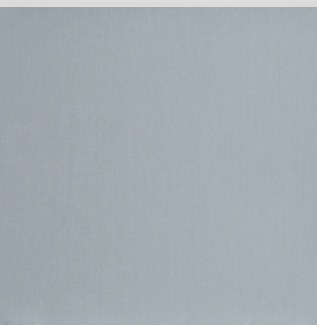
Mitsubishi Chemical Composites America, Inc. reserves the right to change or delete information herein without prior notice.

©2017 Mitsubishi Chemical Composites America, Inc. All rights reserved. ALPOLIC® is a registered trademark of Mitsubishi Chemical Corporation. Lumiflon® is a registered trademark of Asahi Glass Company. Kynar® is a registered trademark of Arkema, Inc.

LITAP3000 Rev.17
March 2017



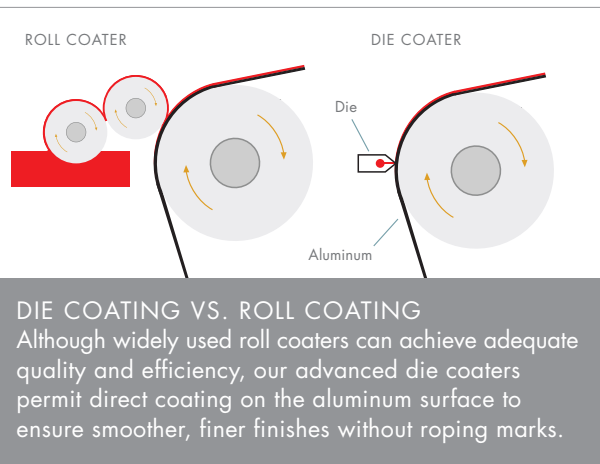
MITSUBISHI CHEMICAL COMPOSITES AMERICA, INC.



Choose the Highest Standard of Quality, Durability and Beauty

HIGH-PERFORMANCE FLUOROPOLYMER RESINS – Our Lumiflon® FEVE and Kynar® PVDF resins are the most advanced architectural coatings available, meeting or exceeding AAMA 2605 specifications to deliver superior durability, weatherability and chemical resistance. Choose Lumiflon® FEVE for the broadest color palette with a gloss range from satin to high luster. This remarkable finish can also be touched up with an air-dry system.

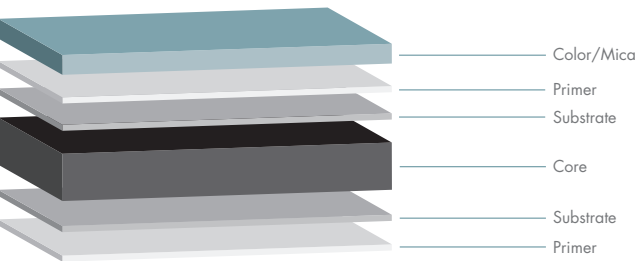
SHORT RUN CAPABILITIES – With our advanced die coating process and controlled curing, we can coil coat as little as 1,000 square feet of material in a broad choice of colors. You can count on the same color consistency, quality and lengthy warranty we offer for the largest orders. Gain practically unlimited design flexibility, thanks to our ability to deliver short runs of custom colors in your choice of 40-, 50- or 62-inch widths.



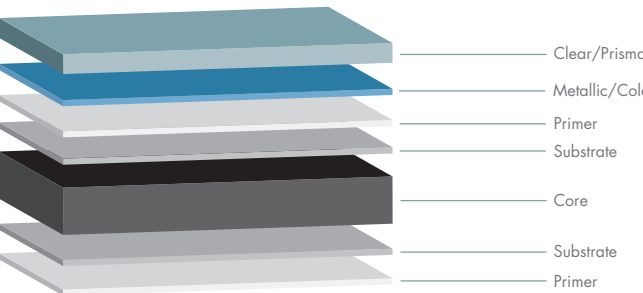
GLOSS RANGE – Different gloss levels can significantly change the eye’s perception of color. If you would like a different gloss level than the sample you submit for color matching, let us know. We will work with you directly to ensure the gloss level you want is achieved.

FINISH DIRECTIONALITY – For best color consistency, maintain the same directionality throughout design, estimation, fabrication and construction. We recommend ordering finishes for your entire job at one time, from one lot of material.

2 Coat Solid/Mica



3 Coat Metallic/Prismatic



LIGHT REFLECTANCE VALUE – LRV numbers indicate the percentage of visible light reflected by the surface. This value is defined in ASTM C609 as the Y value in an XYZ/Yxy color space. While the LRV values shown on this chart are typical, there can be slight variations between individual lots.

SOLAR REFLECTANCE INDEX – SRI numbers, as defined by ASTM E1980 using 12 W/m2K values, indicate the material’s reflectivity (how well it reflects back instead of absorbing radiant energy) and emissivity (how well it radiates absorbed heat back into the environment). The Cool Roof Rating Council (CRRC) requires an SRI value of 29 or greater for steep-slope roofs to earn a “Cool” rating. Most of our Architectural stock colors meet this requirement, and we have added “Cool” after the SRI value for easy reference.

For expert assistance with product availability, material selection, sizing and colors, please contact your local ALPOLIC® sales office.

BUILD YOURS WITH ALPOLIC® COLORS AND FINISHES

ALPOLIC®
M A T E R I A L S

Let's Build

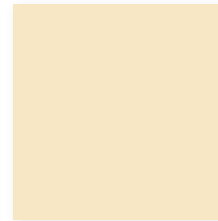
30 Year Finish Warranty Stock Colors

Stocked in 4mm thick panels

SOLID



Bone White
4-BNT-30
LRV 78.50/SRI 82-Cool



Oyster
4-CRT-30
LRV 72.46/SRI 82-Cool



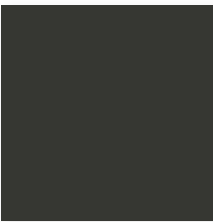
Mist White
4-MST-30
LRV 69.96/SRI 75-Cool



Aluminum Grey
4-AGT-30
LRV 31.60/SRI 26



BGY Grey
4-BGY-50
LRV 10.41/SRI 7



Bronze
4-JBR-30
LRV 3.34/SRI 2



TOB Black
4-TOB-15
LRV 1.01/SRI 0


MICA



Mica Platinum
4-OPT-50
LRV 30.88/SRI 53-Cool




Mica Anodic Clear
4-MNC-30
LRV 34.43/SRI 56-Cool



Mica Champagne
4-MCU-30
LRV 22.61/SRI 38-Cool



Mica Grey
4-MZG-50
LRV 7.95/SRI 14



Mica MFS Grey
4-MFS-30
LRV 13.41

METALLIC




BSX Silver Metallic
4-BSX-30
LRV 30.94/SRI 71-Cool



Silver Metallic
4-SMX-30
LRV 36.59/SRI 63-Cool



Champagne Metallic
4-CMX-30
LRV 31.19/SRI 59-Cool



Medium Bronze Metallic
4-MBX-30
LRV 31.20/SRI 40-Cool

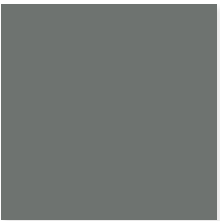





Dark Copper Metallic
4-DCX-30
LRV 15.09/SRI 47-Cool

20 Year Finish Warranty Stock Colors

Stocked in 4mm unless otherwise stated

SOLID				
				
BBR Red 4-BBR-30 LRV 8.06 3&4mm	BTR Red 4-BTR-50 LRV 11.57 3&4mm	TOR Red 4-TOR-70 LRV 9.06	JLR Red 4-JLR-50 LRV 5.44	JXR Red 4-JXR-30 LRV 10.50
				
TRC Red 4-TRC-30 LRV 8.52	AUB Blue 4-AUB-50 LRV 3.25	CVB Blue 4-CVB-70 LRV 13.79	HNB Blue 4-HNB-50 LRV 16.78	RTB Blue 4-RTB-60 LRV 9.06
				
MBU Blue 4-MBU-30 LRV 10.59	HYB Blue 4-HYB-30 LRV 4.20	ABE Blue 4-ABE-70 LRV 23.73	AYW Yellow 4-AYW-70 LRV 61.77	HYE Yellow 4-HYE-50 LRV 62.5
				
RVW White 4-RVW-50 LRV 86.34	HWH White 4-HWH-50 LRV 80.8	COW White 4-COW-30 LRV 68.67	BLX Black 4-BLX-30 LRV 0.89 3&4mm	TBL Black 4-TBL-70 LRV 0.75 3&4mm





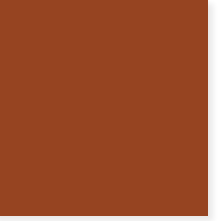
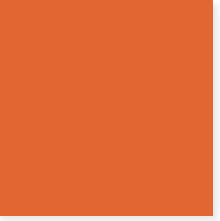

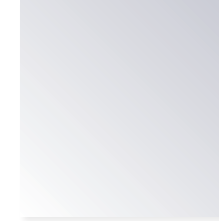
SOLID	METALLIC			
				
CVG Grey 4-CVG-50 LRV 14.38 3&4mm	PEX Pewter Metallic 4-PEX-30 LRV 20.63	TSZ Silver Metallic 4-TSZ-70 LRV 32.00	TBX Silver Metallic 4-TBX-30 LRV 38.75 3&4mm	



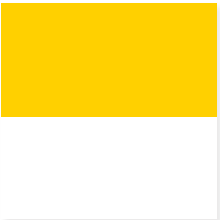
10 Year Finish Warranty Stock Colors

Stocked in 3mm thick panels

SOLID				
				
STR Red 3-STR-70 LRV 12.55	TRD Red 3-TRD-70 LRV 10.26	FEF Red 3-FEF-70 LRV 11.64	BPS Pearl 3-BPS-30 LRV 68.79	ETT Tan 3-ETT-30 LRV 47.87
				
CRY Oyster 3-CRY-50 LRV 72.30	CTW White 3-CTW-30 LRV 76.42	MCV White 3-MCV-70 LRV 68.21	SAW White 3-SAW-70 LRV 80.62	EWH White 3-EWH-70 LRV 90.01
				
DYB Blue 3-DYB-50 LRV 10.06	CFB Blue 3-CFB-70 LRV 7.24	SHB Blue 3-SHB-70 LRV 4.12	BGN Green 3-BGN-50 LRV 14.39	BYL Yellow 3-BYL-50 LRV 65.93
				
EYL Yellow 3-EYL-30 LRV 48.05	YLW Yellow 3-YLW-50 LRV 49.88	SBR Bronze 3-SBR-30 LRV 6.32	CNC Charcoal 3-CNC-30 LRV 4.20	SOG Grey 3-SOG-70 LRV 49.50
				
TXG Grey 3-TXG-70 LRV 40.69				

Specialty Stock Colors/Finishes

STONE SERIES 20 Year Finish Warranty		TIMBER SERIES 20 Year Finish Warranty		
				
Black Granite 4-LBG-70 LRV N/A		Maple 4-MPL-30 LRV N/A	Walnut 4-WLN-30 LRV N/A	Mahogany 4-QAE-30 LRV N/A
PRISMATIC		DECORATIVE		
				
MRT Prismatic Magma 10 Year Finish Warranty 3-MRT-70 LRV 11.33	DGO Pearlescent Orange 10 Year Finish Warranty 3-DGO-70 LRV 22.21	HPA High Polished Aluminum 5 Year Finish Warranty 3-HPA-70 LRV 0.88	HLZ Hairline Aluminum 10 Year Finish Warranty 4-HLZ-70 LRV 16.32	

MULTI-COLOR		
		
Red/White 10 Year Finish Warranty 3-209-70 LRV 11.64/SRI 80.90	Blue/White 10 Year Finish Warranty 3-207-70 LRV 8.00/SRI 81.04	Yellow/White 10 Year Finish Warranty 3-234/238-35 LRV 48.05/SRI 90.01

Architectural Premium Stock Finishes

Call ALPOLIC® Customer Service for Warranty Details 800.422.7270

NATURAL METALS			ANODIZED
			
Stainless 4-4HL LRV 21.84/SRI 34-Cool	Zinc 4-AZZ LRV 21.51/SRI 0	Copper 4-C12 LRV 5.03/SRI 55-Cool	Clear 4-CLR LRV 34.31/SRI 84-Cool

*Colors shown are as close to actual colors as allowed by the printing process. Mitsubishi Chemical Composites America, Inc. reserves the right to change or delete information herein without prior notice. Please refer to warranty details for exclusions and limitations. Additional warranty coverage may be given to some projects/products. Please call 800.422.7270 for more information.

*Colors shown are as close to actual colors as allowed by the printing process. Mitsubishi Chemical Composites America, Inc. reserves the right to change or delete information herein without prior notice. Please refer to warranty details for exclusions and limitations. Additional warranty coverage may be given to some projects/products. Please call 800.422.7270 for more information.

*Colors shown are as close to actual colors as allowed by the printing process. Mitsubishi Chemical Composites America, Inc. reserves the right to change or delete information herein without prior notice. Please refer to warranty details for exclusions and limitations. Additional warranty coverage may be given to some projects/products. Please call 800.422.7270 for more information.

*Colors shown are as close to actual colors as allowed by the printing process. Mitsubishi Chemical Composites America, Inc. reserves the right to change or delete information herein without prior notice. Please refer to warranty details for exclusions and limitations. Additional warranty coverage may be given to some projects/products. Please call 800.422.7270 for more information.